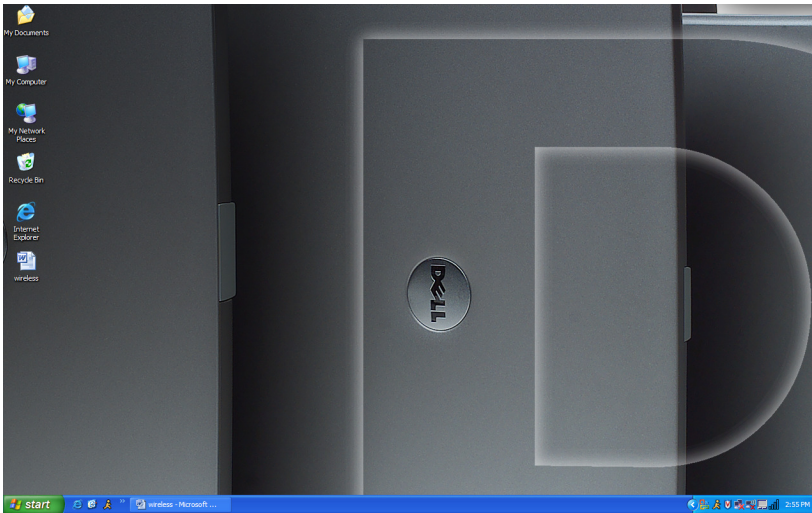


Connecting to Wireless Internet in the Library

Created on Dell Notebook running Windows XP w/ Service Pack 2

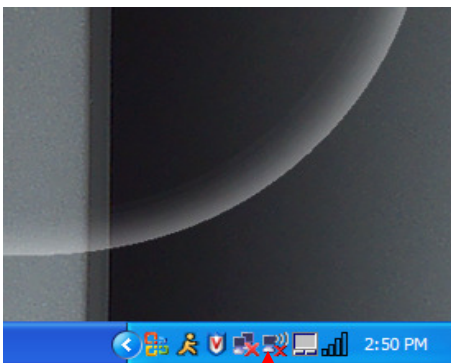
Please note that in order for your machine to use wireless internet you must have a wireless network adapter installed on the machine.

- 1) Start at the desktop of the machine which should look similar to the image below

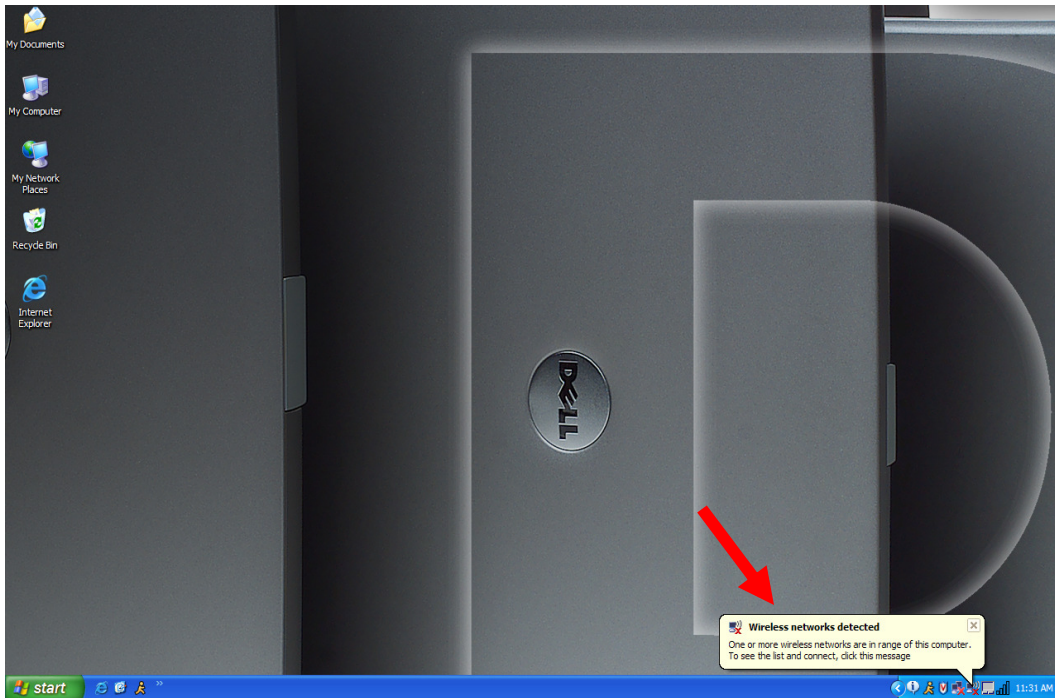


Desktop Image

- 2) On the lower right of the Start Menu you should see a group of icons next to the system time. Look for an icon that shows a computer with three lines, this icon may have a red X next to it. See image below. You may also see a message that says “Wireless networks detected”.

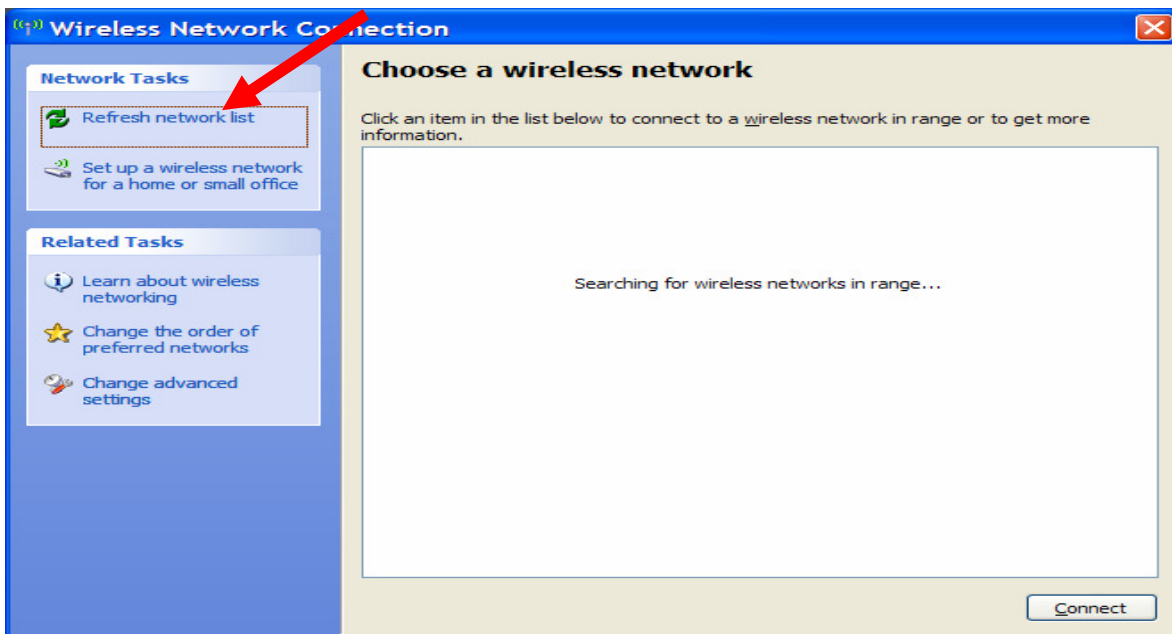


Close up image



Wireless networks detected image

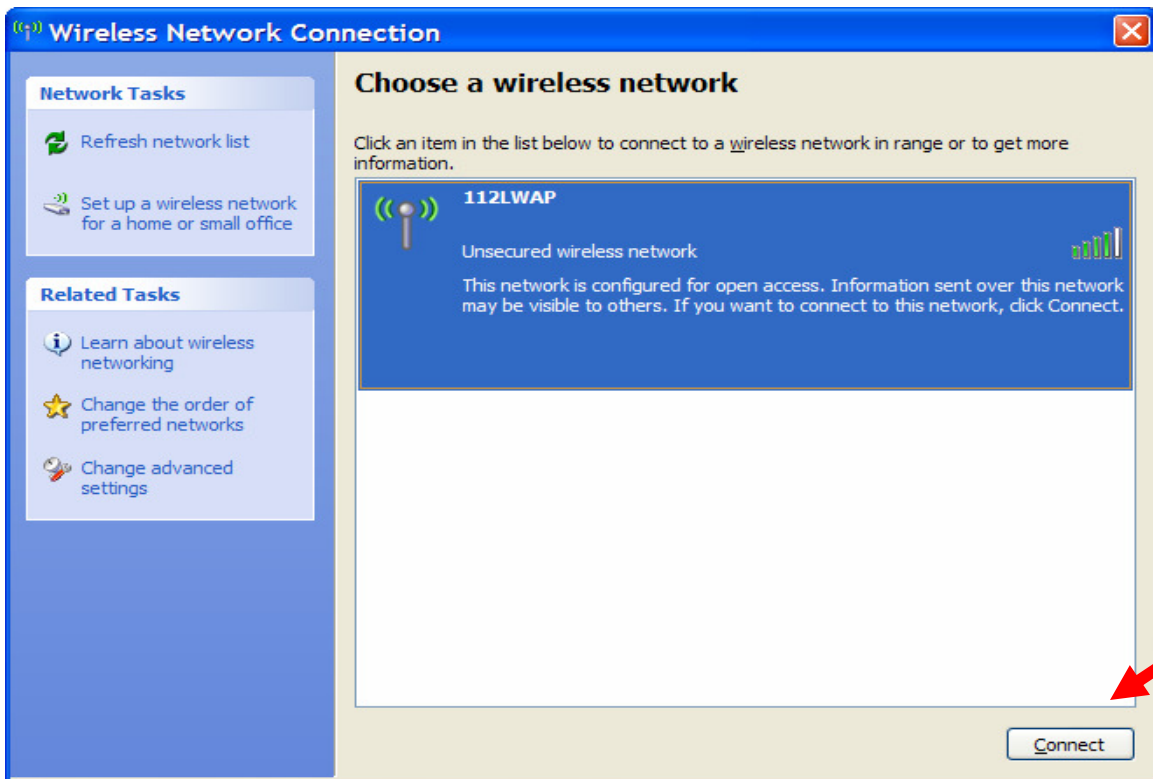
- 3) Double click on the icon and a Wireless Network Connection window will appear. This should look something like the image below. At this point you should see any wireless networks in range listed in this box. You can click the “Refresh network list” button if a network does not display.



Wireless Network Connection Image

- 4) When the list of Wireless Networks appears:
 - a. Click on the name of the network you want to connect to
 - b. Click on the connect button towards the lower right of the window.

- c. If you don't see any networks listed please check to see if your wireless card is installed and/or turned on (Certain laptops have a button to turn off and on the wireless cards).



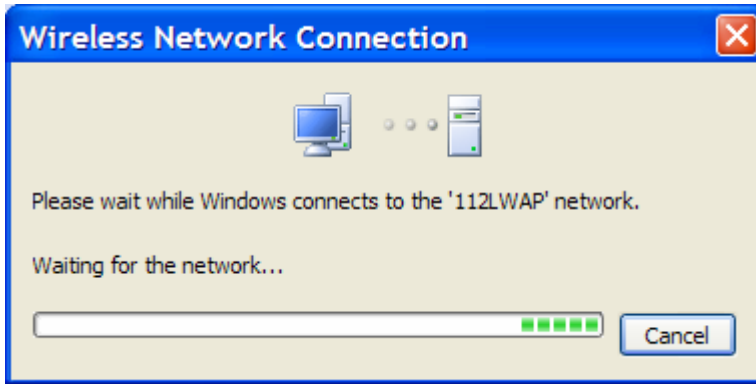
Refresh Network List

- 5) You may see an image like the one below when you connect to the wireless network. Click on "Connect Anyway".



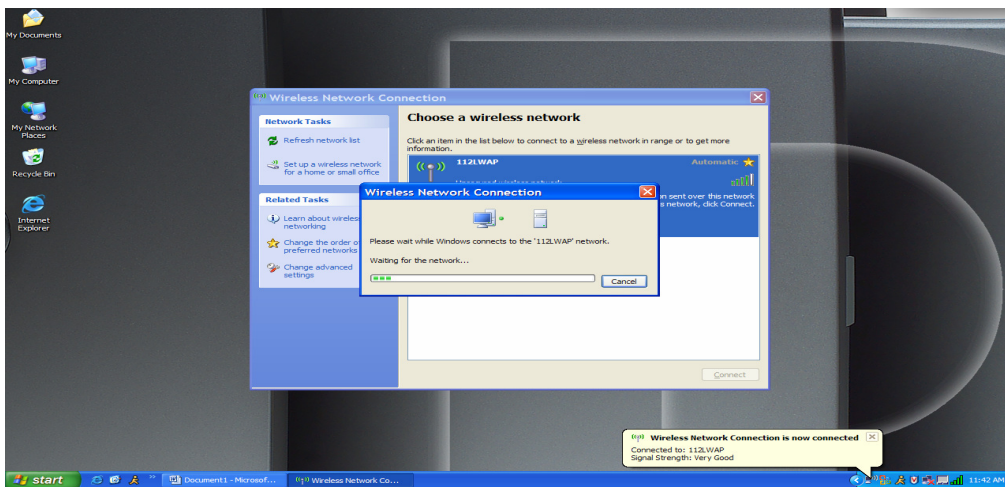
Wireless warning image

- 6) Next you will see a window showing how your computer is configuring itself to use the wireless network. This box will disappear by itself.



Connecting to network

- 7) When your computer is done setting up the network you should be ready to use the internet. You may see a message down below that shows the signal strength of the wireless signal. If the box says you have a low signal try to move your seat to a different location.



Signal window

- 8) The last and final step is to open up your browser and enjoy the internet!

